

# ÜBERSICHTSZEICHNUNG

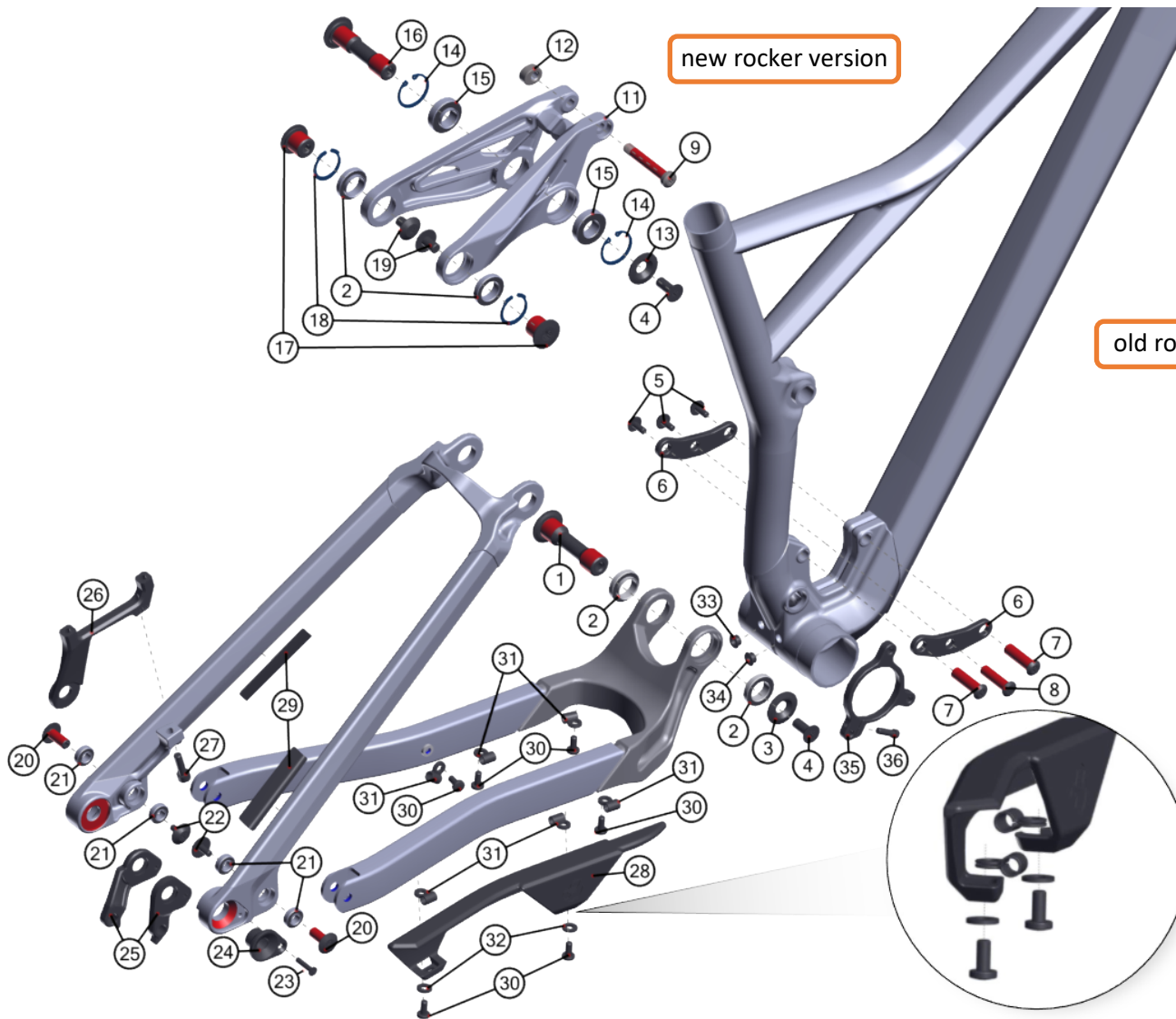


FRAMR 8 LC & FRAMR 6 AL (MY17)

2018-10-04

V01

## ÜBERSICHTSZEICHNUNG

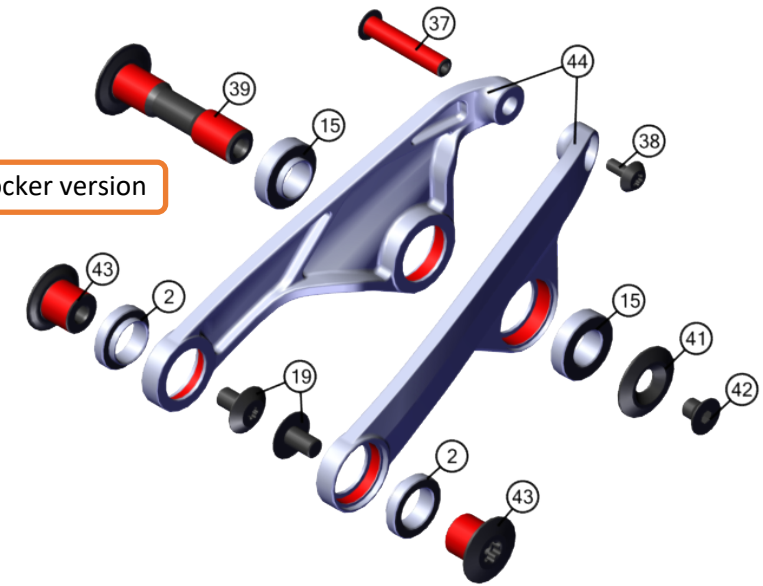


new rocker version

**Hinweis:** Bei Schrauben muß mittelfeste Gewindegewissicherung verwendet werden.  
Rote Flächen müssen gefettet werden.

**note:** use medium strength screwlock for screw threads.  
red surfaces has to be greased.

old rocker version



BOM-ID	Item no.	Description	Torque	QTY
	2	SM1379 Main Pivot bearing		2
	15	SM1380 Seat Tube Rocker Pivot Bearing		2
	19	SM1378 Screw SS Yoke	8 Nm	2
	37	EZ2255 Axle Shock Mount Top		1
	38	SM1377 Screw Shock Mount	6 Nm	1
	39	SM1365 Axle Rocker Pivot		1
	41	SM1371 Nut Rocker Fix Pivot		1
	42	SM1375 Flat Head Screw M8	12 Nm	1
	43	SM1366 Axle Seat Stay Pivot		2
	44	SM1382 Rocker Set		1

FRAMR 8 LC & FRAMR 6 AL (MY17)

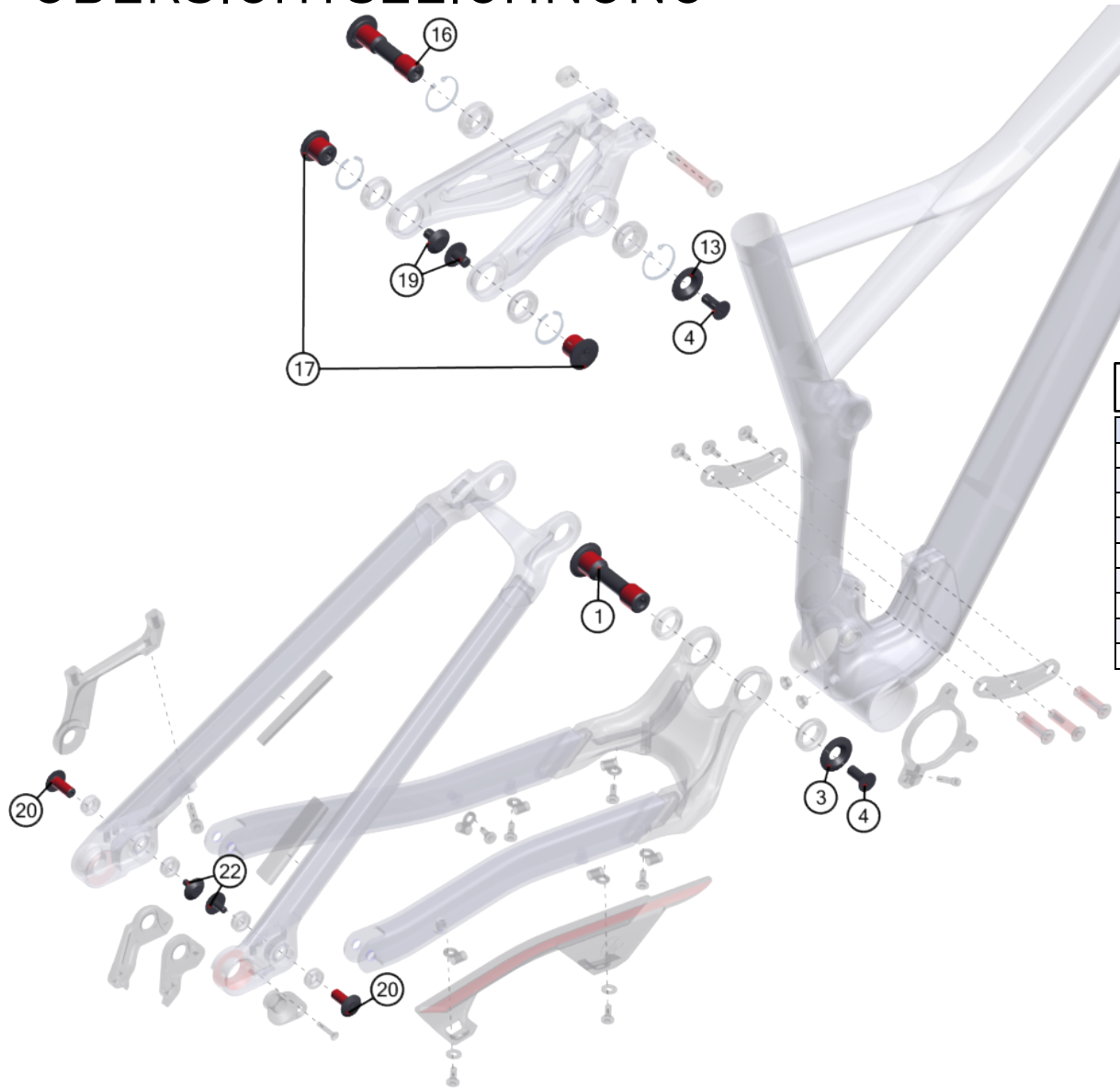
2018-10-04

V01

## ÜBERSICHTSZEICHNUNG

BOM-ID	Description	Specification	Torque	Item no.	QTY
1	Axel Main Pivot	T50 - ø17 (M8)	8 Nm	SM1364	1
2	Seat Stay & Main Pivot bearing			SM1379	4
3	Cap Nut Main Pivot			SM1370	1
4	Flat Head Screw M8	T30 - M8 x 20mm	8 Nm or 12 Nm	SM1375	2
5	Screw Shock Mount	T25 - M5 x 12mm	6 Nm	SM1377	3
6	Shock Mount			FROT0027	2
7	Axle Shock Mount			SM1367	2
8	Axle Shock	T30 - ø8 (M5) x 40mm		SM1369	1
9	Axle Shock Mount Bolt Top			FRAX0005	1
11	Rocker one piece			FROT0023	1
12	Insert nut for Rocker			FRNT0004	1
13	Cap Rocker Fix Pivot			FROT0020	1
14	Circlip RFP	28mm DIN 472		FRWS0028	2
15	Seat Tube - Rocker Pivot Bearing			SM1380	2
16	Axle Rocker Fix Pivot	T50 - ø15 (M8) x 62,5mm	12 Nm	FRAX0006	1
17	Axle Seat Stay Pivot	T50 - ø17 (M8) x 13,5mm	8 Nm	FRAX0007	2
18	Circlip SSP	26mm		FRWS0026	2
19	Screw SS Yoke	T30 - M8 x 13mm	8 Nm	SM1378	2
20	Axle Horst Link	T30 - ø8 (M5) x 18,9mm	6 Nm	SM1363	2
21	Horst Link Pivot Bearing			SM1381	4
22	Screw CS&DO	T25 - M5 x 11mm	6 Nm	SM1376	2
23	Flat Head Screw M4	T15 - M4 x 20mm	0,8 Nm	FRSC0061	1
24	Hanger Mount			FRNT0061	1
25	Shimano Hanger (A1)			FRHG0058	1
25	SRAM Hanger (A2)			FRHG0057	1
26	Disc Brake Mount			FROT0013	1
27	Post Mount Screw	T30 - M6 x 26mm	8 Nm	SM1372	1
28	C/S protector			FRPR0013	1
29	S/S Protector			SM1392	2
30	Screw	T25 - M5 x 11 mm	5 Nm	SM0919	6
31	cable guide			SM0002	6
32	Spacer PA black	DIN 125 M5 11,8x1,5x5,3		FRWS0002	2
33	BB cap BR			SM1390	1
34	BB cap RD			SM1389	1
35	ISCG Adapter			SM1395	1
36	Screw ISCG		5 Nm	SM1393	1

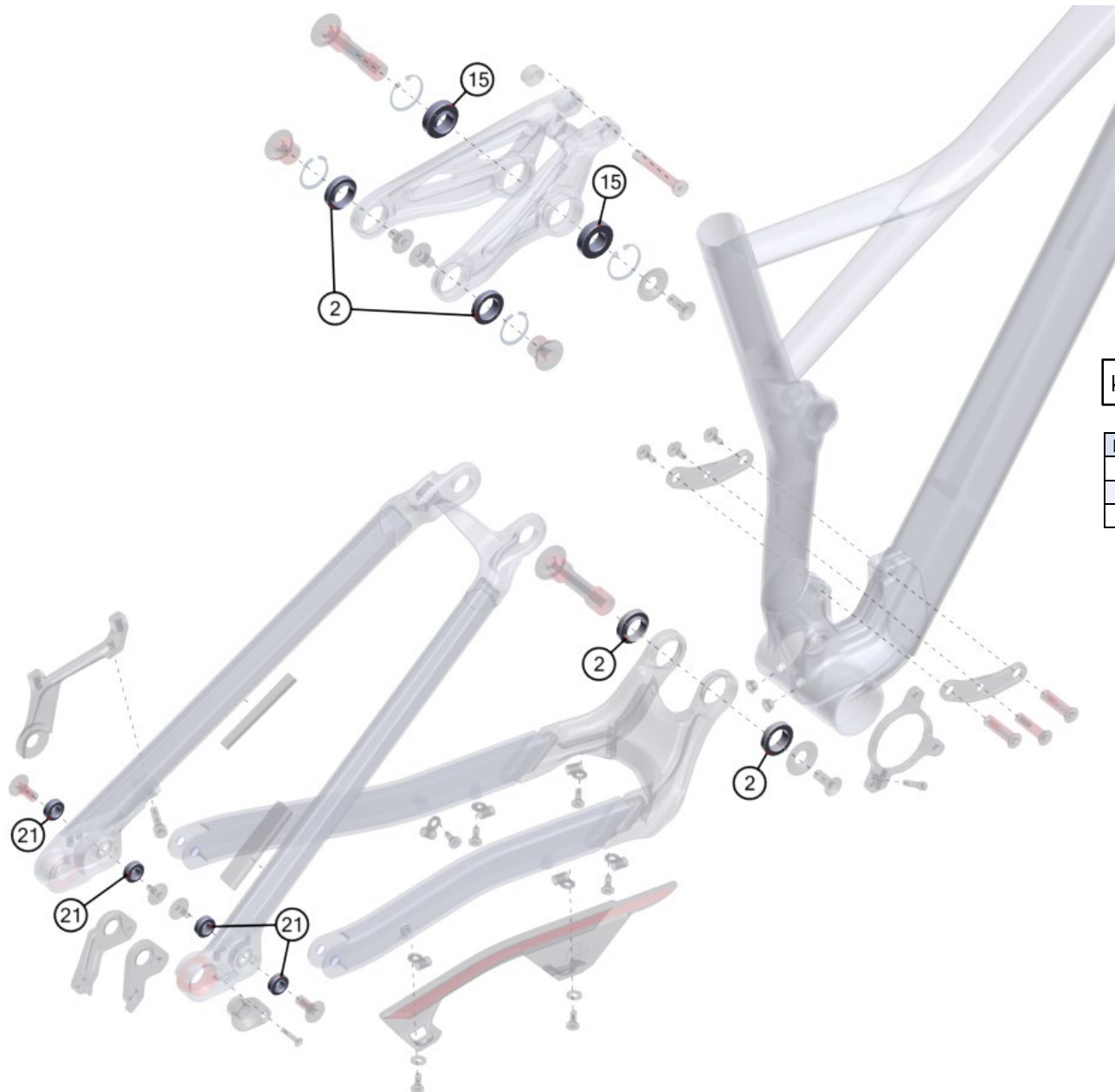
## ÜBERSICHTSZEICHNUNG



KE0299 Axle & Screw Kit

BOM-ID	Description	Specification	Torque	Item no.	QTY
1	Axle Main Pivot	T50 - ø17 (M8)	8 Nm	SM1364	1
3	Cap Nut Main Pivot			SM1370	1
4	Flat Head Screw M8	T30 - M8 x 20mm	8 Nm or 12 Nm	SM1375	2
13	Cap Rocker Fix Pivot			FR0T0020	1
16	Axle Rocker Fix Pivot	T50 - ø15 (M8) x 62,5mm	12 Nm	FRAX0006	1
17	Axle Seat Stay Pivot	T50 - ø17 (M8) x 13,5mm	8 Nm	FRAX0007	2
19	Screw SS Yoke	T30 - M8 x 13mm	8 Nm	SM1378	2
20	Axle Horst Link	T30 - ø8 (M5) x 18,9mm	6 Nm	SM1363	2
22	Screw CS&DO	T25 - M5 x 11mm	6 Nm	SM1376	2

## ÜBERSICHTSZEICHNUNG

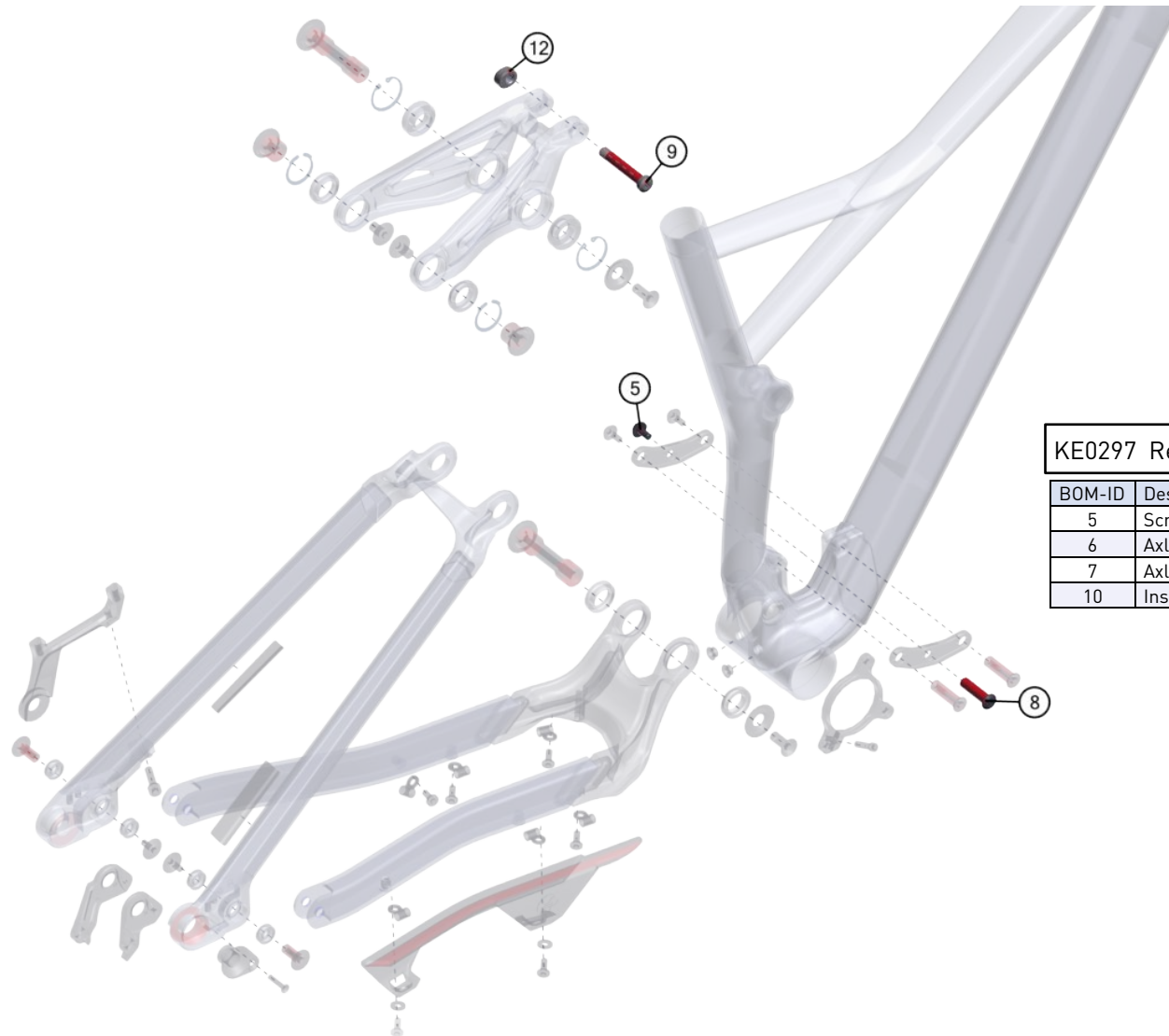


KE0276 Bearing Kit

BOM-ID	Description	Item no.	QTY
2	Main Pivot & Seat Stay Pivot	SM1379	4
13	Seat Tube - Rocker Pivot Bearing	SM1380	2
19	Horst Link Pivot Bearing	SM1381	4



## ÜBERSICHTSZEICHNUNG



KE0297 Rear Shock Screw Kit

BOM-ID	Description	Specification	Torque	Item no.	QTY
5	Screw Shock Mount	T25 - M5 x 12mm	6 Nm	SM1377	1
6	Axle Shock	T30 - ø8 (M5) x 40mm		SM1368	1
7	Axle Shock Mount Bolt Top		6 mm	FRAX0005	1
10	Insert nut for Rocker			FRNT0004	1